

Deanside Village.

Right where you are.



HomebuyersCentre
First choice in first homes

HOMEBUYERS CENTRE

KINGSTON 25

\$806,300

4  2  2 

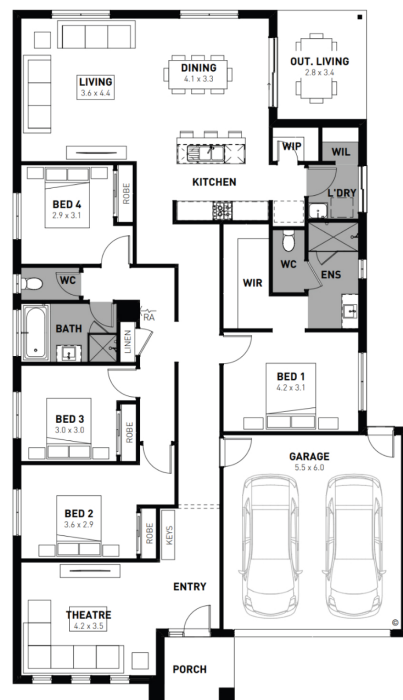
LOT: 2155

AREA: 444m²

FRONTAGE: 13m

INCLUSIONS

- Fixed site costs
- Exposed aggregate driveway
- Prescott facade included
- Quality floor coverings throughout
- Tiled kitchen splashback
- Westinghouse stainless steel appliances
- Choice of matt black or chrome tapware
- Brick infills over windows
- 25 year structural guarantee
- 12 month service warranty
- 7 Star energy rating
- NBN Connection
- 2550mm high ceilings to ground floor
- 450mm eaves to front facade



deansidevillage.com.au

Inspiring Places™ delivered by Moremac.

WHILE BEST ENDEAVOURS HAVE BEEN USED TO PROVIDE INFORMATION IN THIS PUBLICATION THAT IS TRUE AND ACCURATE, DEANSIDE VILLAGE, ITS CONSULTANTS, AGENTS AND RELATED ENTITIES ACCEPT NO RESPONSIBILITY AND DISCLAIM ALL LIABILITY IN RESPECT TO ANY ERRORS OR INACCURACIES IT MAY CONTAIN. PROSPECTIVE PURCHASERS SHOULD MAKE THEIR OWN ENQUIRIES TO VERIFY THE INFORMATION CONTAINED HEREIN.