

# Deanside Village.

Right where you are.



SIMONDS

## CAPE 22

\$710,687

3 2 2

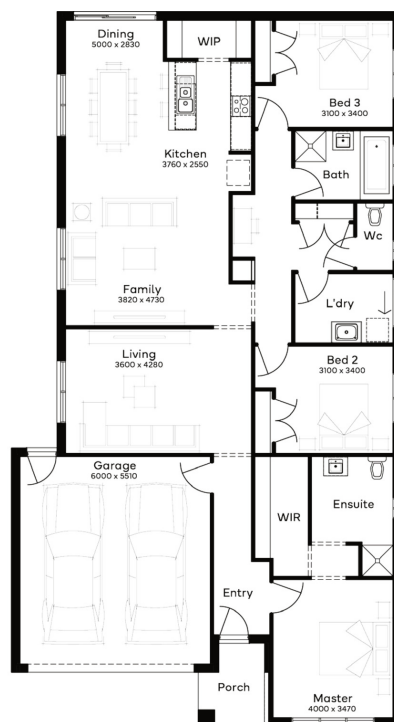
LOT: 2105

AREA: 350m<sup>2</sup>

FRONTAGE: 12.5m

### INCLUSIONS

- Fixed price Site Costs
- Developer & council requirements
- Photovoltaic panels with inverter
- Feature front entry door
- Colorbond Sectional garage door & remote controls
- Floor coverings to entire house
- 20mm Stone benchtops to kitchen
- Quality stainless steel cooktop & oven
- Ducted Heating
- Plus much more!



[deansidevillage.com.au](http://deansidevillage.com.au)

Inspiring Places™ delivered by Moremac.

WHILE BEST ENDEAVOURS HAVE BEEN USED TO PROVIDE INFORMATION IN THIS PUBLICATION THAT IS TRUE AND ACCURATE, DEANSIDE VILLAGE, ITS CONSULTANTS, AGENTS AND RELATED ENTITIES ACCEPT NO RESPONSIBILITY AND DISCLAIM ALL LIABILITY IN RESPECT TO ANY ERRORS OR INACCURACIES IT MAY CONTAIN. PROSPECTIVE PURCHASERS SHOULD MAKE THEIR OWN ENQUIRIES TO VERIFY THE INFORMATION CONTAINED HEREIN.