

# Deanside Village.

Right where you are.



**HomebuyersCentre**  
First choice in first homes

HOMEBUYERS CENTRE

## EDISON 23

**\$755,400**

4  2  2 

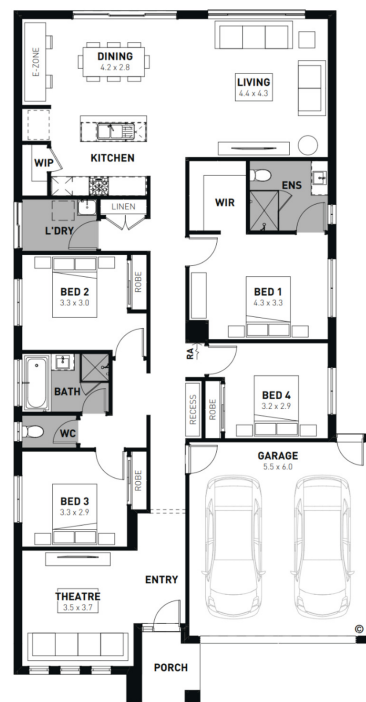
LOT: 1928

AREA: 400m<sup>2</sup>

FRONTAGE: 12.5m

### INCLUSIONS

- Soul facade included
- Fixed site costs
- 7 Star energy rating
- Exposed aggregate driveway
- Brick infills over windows
- Quality floor coverings throughout
- Low E double glazed windows and sliding doors
- 3.5kW solar PV system
- Westinghouse stainless steel appliances
- Choice of matt black or chrome tapware
- 12 month maintenance period
- 25 year structural guarantee
- NBN Connection
- 2550mm high ceilings to ground floor
- 450mm eaves to front facade



[deansidevillage.com.au](http://deansidevillage.com.au)

Inspiring Places™ delivered by Moremac.

WHILE BEST ENDEAVOURS HAVE BEEN USED TO PROVIDE INFORMATION IN THIS PUBLICATION THAT IS TRUE AND ACCURATE, DEANSIDE VILLAGE, ITS CONSULTANTS, AGENTS AND RELATED ENTITIES ACCEPT NO RESPONSIBILITY AND DISCLAIM ALL LIABILITY IN RESPECT TO ANY ERRORS OR INACCURACIES IT MAY CONTAIN. PROSPECTIVE PURCHASERS SHOULD MAKE THEIR OWN ENQUIRIES TO VERIFY THE INFORMATION CONTAINED HEREIN.