

Deanside Village.

Right where you are.



BOUTIQUE HOMES

BARCELONA 27

\$834,600

4  2  2 

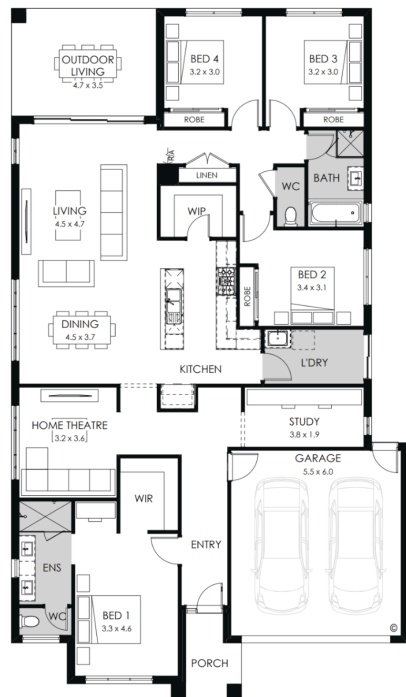
LOT: 1941

AREA: 448m²

FRONTAGE: 14m

INCLUSIONS

- Cape facade included
- 7-Star energy rating
- Fixed site costs
- Low E Double glazed thermally broken awning windows
- Low E Double glazed sliding stacker doors
- 3.5kW solar PV system
- Quality floor coverings throughout
- 2550mm high ceilings to ground floor
- LED downlights to entry, kitchen and living
- Soft closers to draws and doors
- ILVE 900mm wide oven, cooktop and rangehood
- Overhead kitchen cupboards adjacent to rangehood
- 40mm stone kitchen benchtops
- 20mm stone bathroom benchtops
- Quality Caroma basins and tapware
- 12 month maintenance period & 25 year structural guarantee
- NBN Connection



deansidevillage.com.au

Inspiring Places™ delivered by Moremac.

WHILE BEST ENDEAVOURS HAVE BEEN USED TO PROVIDE INFORMATION IN THIS PUBLICATION THAT IS TRUE AND ACCURATE, DEANSIDE VILLAGE, ITS CONSULTANTS, AGENTS AND RELATED ENTITIES ACCEPT NO RESPONSIBILITY AND DISCLAIM ALL LIABILITY IN RESPECT TO ANY ERRORS OR INACCURACIES IT MAY CONTAIN. PROSPECTIVE PURCHASERS SHOULD MAKE THEIR OWN ENQUIRIES TO VERIFY THE INFORMATION CONTAINED HEREIN.