

# Deanside Village.

Right where you are.



CARLISLE HOMES

## EDGEWOOD 23

\$734,900

4  2  2 

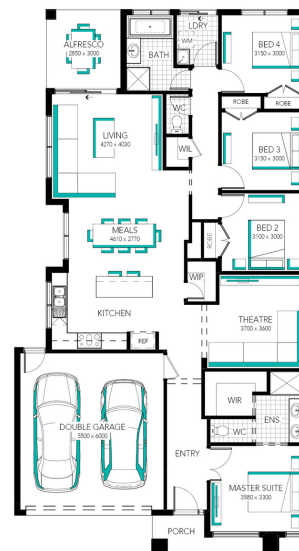
LOT: 2029

AREA: 350m<sup>2</sup>

FRONTAGE: 12.5m

### INCLUSIONS

- Fixed price site costs and connections
- Developer and council requirements
- 20mm Caesarstone benchtops to kitchen
- Upgraded kitchen appliances incl. dishwasher
- Feature overhead kitchen cupboards
- Glass splashback to kitchen
- Laundry fit-out
- Feature staircase balustrade
- LED lighting
- Upgraded H-Class slab
- Double glazing throughout
- \$5,000 off fully rendered Hebel facades\*
- 7 Star energy rating



[deansidevillage.com.au](http://deansidevillage.com.au)

Inspiring Places™ delivered by Moremac.

WHILE BEST ENDEAVOURS HAVE BEEN USED TO PROVIDE INFORMATION IN THIS PUBLICATION THAT IS TRUE AND ACCURATE, DEANSIDE VILLAGE, ITS CONSULTANTS, AGENTS AND RELATED ENTITIES ACCEPT NO RESPONSIBILITY AND DISCLAIM ALL LIABILITY IN RESPECT TO ANY ERRORS OR INACCURACIES IT MAY CONTAIN. PROSPECTIVE PURCHASERS SHOULD MAKE THEIR OWN ENQUIRIES TO VERIFY THE INFORMATION CONTAINED HEREIN.